

試算表送付のご案内


㈱しえあーど 御中

6 年 月
3


拝啓 貴社益々のご清栄のこととお喜び申し上げます。
さて、試算表を同封しましたのでご検討ください。敬具

記

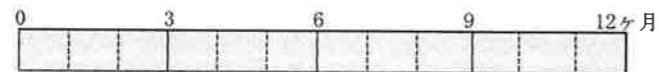
◎売上

| | | (前年) | (対比) |  |
|------|------------|------------|---------|---|
| 当月 | 24,599 千円 | 26,686 千円 | 92.2 % | |
| 当期累計 | 295,147 千円 | 292,208 千円 | 101.0 % | |

◎利益

| | | (前年) |  |
|------|----------|----------|---|
| 当月 | ▲ 444 千円 | ▲ 53 千円 | |
| 当期累計 | ▲ 892 千円 | 4,166 千円 | |

経過月数



売上達成率

(前期年額=100%)



令和6年4月22日

合計残高試算表（貸借対照表）

令和 6年 3月31日 現在

0181 有限会社 しえあーど

| 勘定科目 | | 前月残高 | 借方 | 貸方 | 当月残高 | 構成比 |
|------------|-------------|-------------|------------|-------------|-------------|-------|
| 流動資産 | 現金 | 40,145 | 455,378 | 367,223 | 128,300 | 0.1 |
| | 鴻池現金 | 17,059 | 44,080 | 41,773 | 19,366 | 0.0 |
| | きつず現金 | 35,182 | 178,510 | 174,982 | 38,710 | 0.0 |
| | (現金) | 92,386 | 677,968 | 583,978 | 186,376 | 0.1 |
| | 郵便貯金 | 1,234,988 | 15,000,000 | 13,798,477 | 2,436,511 | 1.7 |
| | 郵便貯金 | 356,306 | 165,547 | 33,670 | 488,183 | 0.3 |
| | 尼信普通 | 18,246,533 | 35,105,806 | 31,271,674 | 22,080,665 | 15.7 |
| | 尼信普通 | 25 | | | 25 | 0.0 |
| | (流動性預金) | 19,837,852 | 50,271,353 | 45,103,821 | 25,005,384 | 17.7 |
| | 定期預金 | 1,000,000 | | | 1,000,000 | 0.7 |
| | (固定性預金) | 1,000,000 | | | 1,000,000 | 0.7 |
| | (預金) | 20,837,852 | 50,271,353 | 45,103,821 | 26,005,384 | 18.4 |
| | [現金預金] | 20,930,238 | 50,949,321 | 45,687,799 | 26,191,760 | 18.6 |
| | 売掛金 | 46,992,407 | 24,432,604 | 23,207,585 | 48,217,426 | 34.2 |
| | [営業債権] | 46,992,407 | 24,432,604 | 23,207,585 | 48,217,426 | 34.2 |
| 短期貸付金 | 160,000 | | | 160,000 | 0.1 | |
| 仮払金 | 198,440 | 128,694 | 128,694 | 198,440 | 0.1 | |
| 未収入金 | 154,190 | | | 154,190 | 0.1 | |
| [その他流動資産] | 512,630 | 128,694 | 128,694 | 512,630 | 0.4 | |
| 【流動資産】 | 68,435,275 | 75,510,619 | 69,024,078 | 74,921,816 | 53.1 | |
| 固定資産 | 建物 | 31,594,259 | | | 31,594,259 | 22.4 |
| | 建物附属設備 | 5,633,193 | | | 5,633,193 | 4.0 |
| | 構築物 | 1 | | | 1 | 0.0 |
| | 車両運搬具 | 3,380,166 | | | 3,380,166 | 2.4 |
| | 工具器具備品 | 977,323 | | | 977,323 | 0.7 |
| | 減価償却累計額 | 4,649,700 | | 422,700 | 5,072,400 | 3.6 |
| | [有形固定資産] | 36,935,242 | | 422,700 | 36,512,542 | 25.9 |
| | 出資金 | 100,000 | | | 100,000 | 0.1 |
| | 敷金 | 12,257,700 | | | 12,257,700 | 8.7 |
| | 建築協力金 | 17,311,670 | | 55,600 | 17,256,070 | 12.2 |
| [投資その他の資産] | 29,669,370 | | 55,600 | 29,613,770 | 21.0 | |
| 【固定資産】 | 66,604,612 | | 478,300 | 66,126,312 | 46.9 | |
| 【資産の部】 | 135,039,887 | 75,510,619 | 69,502,378 | 141,048,128 | 100.0 | |
| 負債の部 | 未払金 | 19,818,641 | 15,073,762 | 15,261,070 | 20,005,949 | 14.2 |
| | 預り金 | 976,018 | 1,019,018 | 2,529,067 | 2,486,067 | 1.8 |
| | 賞与引当金 | 3,000,000 | 3,000,000 | | | |
| | 【流動負債】 | 23,794,659 | 19,092,780 | 17,790,137 | 22,492,016 | 15.9 |
| | 長期借入金 | 38,273,000 | 2,225,000 | 10,000,000 | 46,048,000 | 32.6 |
| | 長期未払金 | 3,390,120 | 19,710 | | 3,370,410 | 2.4 |
| 【固定負債】 | 41,663,120 | 2,244,710 | 10,000,000 | 49,418,410 | 35.0 | |
| 【負債の部】 | 65,457,779 | 21,337,490 | 27,790,137 | 71,910,426 | 51.0 | |
| 純資産の部 | 資本金 | 3,000,000 | | | 3,000,000 | 2.1 |
| | 利益準備金 | 750,000 | | | 750,000 | 0.5 |
| | 【繰越利益剰余金】 | 65,832,108 | 444,406 | | 65,387,702 | 46.4 |
| | (当期純損益金額) | ▲448,201 | 444,406 | | ▲892,607 | ▲0.6 |
| | (その他利益剰余金) | 65,832,108 | 444,406 | | 65,387,702 | 46.4 |
| | [利益剰余金] | 66,582,108 | 444,406 | | 66,137,702 | 46.9 |
| | 【株主資本】 | 69,582,108 | 444,406 | | 69,137,702 | 49.0 |
| | 【純資産の部】 | 69,582,108 | 444,406 | | 69,137,702 | 49.0 |
| | 【負債・純資産の部】 | 135,039,887 | 21,781,896 | 27,790,137 | 141,048,128 | 100.0 |

合計残高試算表（損益計算書）

自 令和 5年 4月 1日 至 令和 6年 3月31日

| 勘定科目 | | 前月残高 | 借方 | 貸方 | 当月残高 | 構成比 |
|--------------|--------------|-------------|------------|-------------|-------------|-------|
| 営業外高 | 障害福祉収入 | 168,219,321 | 11,219 | 15,456,330 | 183,664,432 | 62.2 |
| | 介護収入 | 99,878,643 | | 8,976,274 | 108,854,917 | 36.9 |
| | その他収入 | 1,650,000 | | 150,000 | 1,800,000 | 0.6 |
| | カフェ売上 | 800,109 | | 28,510 | 828,619 | 0.3 |
| | (純売上高) | 270,548,073 | | 24,599,895 | 295,147,968 | 100.0 |
| | カフェ仕入 | 539,599 | 21,787 | | 561,386 | 0.2 |
| | (売上原価) | 539,599 | 21,787 | | 561,386 | 0.2 |
| | [売上総損益金額] | 270,008,474 | 24,578,108 | | 294,586,582 | 99.8 |
| | 給与手当 | 104,709,413 | 9,104,395 | | 113,813,808 | 38.6 |
| | 雑給 | 68,437,061 | 6,156,675 | | 74,593,736 | 25.3 |
| | 賞与 | 15,388,500 | 7,466,000 | | 22,854,500 | 7.7 |
| | 賞与引当金繰入 | 3,000,000 | | 3,000,000 | | |
| | 法定福利費 | 30,592,074 | 4,292,108 | 2,194,246 | 32,689,936 | 11.1 |
| | 福利厚生費 | 2,809,720 | 244,386 | | 3,054,106 | 1.0 |
| | リース料 | 1,429,010 | 129,910 | | 1,558,920 | 0.5 |
| 旅費交通費 | 1,745,606 | 108,981 | | 1,854,587 | 0.6 | |
| 通信費 | 3,009,978 | 254,925 | | 3,264,903 | 1.1 | |
| 交際費 | 906,838 | 48,487 | | 955,325 | 0.3 | |
| 減価償却費 | 4,649,700 | 422,700 | | 5,072,400 | 1.7 | |
| 賃借料 | 13,382,702 | 1,271,770 | 59,000 | 14,595,472 | 4.9 | |
| 保険料 | 2,227,880 | 374,827 | | 2,602,707 | 0.9 | |
| 修繕費 | 1,791,080 | 67,540 | | 1,858,620 | 0.6 | |
| 水道光熱費 | 2,238,628 | 293,572 | | 2,532,200 | 0.9 | |
| 燃料費 | 2,108,035 | 203,132 | | 2,311,167 | 0.8 | |
| 消耗品費 | 7,143,319 | 554,827 | 4,080 | 7,694,066 | 2.6 | |
| 租税公課 | 566,300 | 10,800 | | 577,100 | 0.2 | |
| 事務用品費 | 291,502 | 20,214 | | 311,716 | 0.1 | |
| 広告宣伝費 | 22,000 | | | 22,000 | 0.0 | |
| 支払手数料 | 440,000 | 763,125 | | 1,203,125 | 0.4 | |
| 新聞図書費 | 74,538 | 4,900 | | 79,438 | 0.0 | |
| 雑費 | 4,307,632 | 306,526 | | 4,614,158 | 1.6 | |
| [販売費及び一般管理費] | 271,271,516 | 26,842,474 | | 298,113,990 | 101.0 | |
| 【営業損益金額】 | ▲1,263,042 | | 2,264,366 | ▲3,527,408 | ▲1.2 | |
| 営業外損益 | 受取利息 | 157 | | 1 | 158 | 0.0 |
| | 受取配当金 | 1,592 | | | 1,592 | 0.0 |
| | 雑収入 | 1,240,966 | | 1,848,231 | 3,089,197 | 1.0 |
| | [営業外収益] | 1,242,715 | | 1,848,232 | 3,090,947 | 1.0 |
| | 支払利息割引料 | 427,874 | 29,902 | 1,630 | 456,146 | 0.2 |
| | [営業外費用] | 427,874 | 28,272 | | 456,146 | 0.2 |
| | 【営業外損益】 | 814,841 | 1,819,960 | | 2,634,801 | 0.9 |
| | 【経常損益金額】 | ▲448,201 | | 444,406 | ▲892,607 | ▲0.3 |
| | 【税引前当期純損益金額】 | ▲448,201 | | 444,406 | ▲892,607 | ▲0.3 |
| | 【当期純損益金額】 | ▲448,201 | | 444,406 | ▲892,607 | ▲0.3 |
| 【合計】 | | 32,162,708 | 32,162,708 | | | |

部門別損益計算書

0181 有限会社 しえあーど

自 令和 6年 3月 1日 至 令和 6年 3月 31日
単位： 円

| 勘定科目 | 科C | 総合計 | | 共通費0 | | 本部1 | | きつず2 | | カフェ3 | | |
|--------------|-----|------------|-------|------------|--------|------------|------------|-------|-----------|------------|--------|-------|
| | | 金額 | 構成比 | 金額 | 構成比部門比 | 金額 | 構成比部門比 | 金額 | 構成比部門比 | 金額 | 構成比部門比 | |
| 障害福祉収入 | 612 | 15,445,111 | 62.8 | | | 12,828,132 | 100.0 | 83.1 | 2,616,979 | 22.6 | 16.9 | |
| 介護収入 | 613 | 8,976,274 | 36.5 | | | | | | 8,976,274 | 77.4 | 100.0 | |
| その他収入 | 614 | 150,000 | 0.6 | 150,000 | 100.0 | 100.0 | | | | | | |
| カフェ売上 | 615 | 28,510 | 0.1 | | | | | | | 28,510 | 100.0 | |
| [純売上高] | | 24,599,895 | 100.0 | 150,000 | 100.0 | 0.6 | 12,828,132 | 100.0 | 52.1 | 11,593,253 | 100.0 | 47.1 |
| カフェ仕入 | 712 | 21,787 | 0.1 | | | | | | | 21,787 | 76.4 | 100.0 |
| [売上原価] | | 21,787 | 0.1 | | | | | | | 21,787 | 76.4 | 100.0 |
| [売上総損益金額] | | 24,578,108 | 99.9 | 150,000 | 100.0 | 0.6 | 12,828,132 | 100.0 | 52.2 | 11,593,253 | 100.0 | 47.2 |
| 給与手当 | 832 | 9,104,395 | 37.0 | 1,000,000 | 666.7 | 11.0 | 3,419,702 | 26.7 | 37.6 | 4,684,693 | 40.4 | 51.5 |
| 雑給 | 833 | 6,156,675 | 25.0 | | | | 2,562,364 | 20.0 | 41.6 | 3,594,311 | 31.0 | 58.4 |
| 賞与 | 834 | 7,466,000 | 30.3 | | | | 2,890,000 | 22.5 | 38.7 | 4,576,000 | 39.5 | 61.3 |
| 賞与引当金繰入 | 838 | ▲3,000,000 | ▲12.2 | ▲3,000,000 | ***.* | 100.0 | | | | | | |
| 法定福利費 | 836 | 2,097,862 | 8.5 | 2,097,862 | ***.* | 100.0 | | | | | | |
| 福利厚生費 | 837 | 244,386 | 1.0 | 238,825 | 159.2 | 97.7 | | | 5,561 | 0.0 | 2.3 | |
| リース料 | 841 | 129,910 | 0.5 | 129,910 | 86.6 | 100.0 | | | | | | |
| 旅費交通費 | 842 | 108,981 | 0.4 | 8,280 | 5.5 | 7.6 | 11,590 | 0.1 | 10.6 | 89,111 | 0.8 | 81.8 |
| 通信費 | 843 | 254,925 | 1.0 | 23,842 | 15.9 | 9.4 | 24,920 | 0.2 | 9.8 | 206,163 | 1.8 | 80.9 |
| 交際費 | 844 | 48,487 | 0.2 | 48,487 | 32.3 | 100.0 | | | | | | |
| 減価償却費 | 845 | 422,700 | 1.7 | 422,700 | 281.8 | 100.0 | | | | | | |
| 賃借料 | 846 | 1,212,770 | 4.9 | 338,400 | 225.6 | 27.9 | | | 874,370 | 7.5 | 72.1 | |
| 保険料 | 847 | 374,827 | 1.5 | 374,827 | 249.9 | 100.0 | | | | | | |
| 修繕費 | 848 | 67,540 | 0.3 | | | | 43,340 | 0.3 | 64.2 | 24,200 | 0.2 | 35.8 |
| 水道光熱費 | 849 | 293,572 | 1.2 | | | | 205,583 | 1.6 | 70.0 | 87,989 | 0.8 | 30.0 |
| 燃費 | 851 | 203,132 | 0.8 | 181,228 | 120.8 | 89.2 | | | 21,904 | 0.2 | 10.8 | |
| 消耗品費 | 852 | 550,747 | 2.2 | 474,349 | 316.2 | 86.1 | 49,374 | 0.4 | 9.0 | 27,024 | 0.2 | 4.9 |
| 租税公課 | 853 | 10,800 | 0.0 | 10,000 | 6.7 | 92.6 | | | 800 | 0.0 | 7.4 | |
| 事務用品費 | 856 | 20,214 | 0.1 | 20,214 | 13.5 | 100.0 | | | | | | |
| 支払手数料 | 858 | 763,125 | 3.1 | 763,125 | 508.8 | 100.0 | | | | | | |
| 新聞図書費 | 861 | 4,900 | 0.0 | 4,900 | 3.3 | 100.0 | | | | | | |
| 雑費 | 869 | 306,526 | 1.2 | 297,695 | 198.5 | 97.1 | 3,111 | 0.0 | 1.0 | 5,720 | 0.0 | 1.9 |
| [販売費及び一般管理費] | | 26,842,474 | 109.1 | 3,434,644 | ***.* | 12.8 | 9,209,984 | 71.8 | 34.3 | 14,197,846 | 122.5 | 52.9 |
| 【営業損益金額】 | | ▲2,264,366 | ▲9.2 | ▲3,284,644 | ***.* | 145.1 | 3,618,148 | 28.2 | ▲159.8 | ▲2,604,593 | ▲22.5 | 115.0 |
| 受取利息 | 911 | 1 | 0.0 | 1 | 0.0 | 100.0 | | | | | | |
| 雑収入 | 914 | 1,848,231 | 7.5 | 1,848,231 | ***.* | 100.0 | | | | | | |
| [営業外収益] | | 1,848,232 | 7.5 | 1,848,232 | ***.* | 100.0 | | | | | | |
| 支払利息割引料 | 921 | 28,272 | 0.1 | 28,272 | 18.8 | 100.0 | | | | | | |
| [営業外費用] | | 28,272 | 0.1 | 28,272 | 18.8 | 100.0 | | | | | | |
| 【経常損益金額】 | | ▲444,406 | ▲1.8 | ▲1,464,684 | ▲976.5 | 329.6 | 3,618,148 | 28.2 | ▲814.2 | ▲2,604,593 | ▲22.5 | 586.1 |
| ※共通費配賦※ | | | | ▲1,464,684 | ▲976.5 | | 769,373 | 6.0 | | 695,311 | 6.0 | |
| 【配賦後経常損益金額】 | | ▲444,406 | ▲1.8 | | | | 2,848,775 | 22.2 | ▲641.0 | ▲3,299,904 | ▲28.5 | 742.5 |
| 【税引前当期純損益金額】 | | ▲444,406 | ▲1.8 | | | | 2,848,775 | 22.2 | ▲641.0 | ▲3,299,904 | ▲28.5 | 742.5 |
| 【当期純損益金額】 | | ▲444,406 | ▲1.8 | | | | 2,848,775 | 22.2 | ▲641.0 | ▲3,299,904 | ▲28.5 | 742.5 |

部門別損益計算書

0181 有限会社 しえあーど

自 令和 5年 4月 1日 至 令和 6年 3月31日

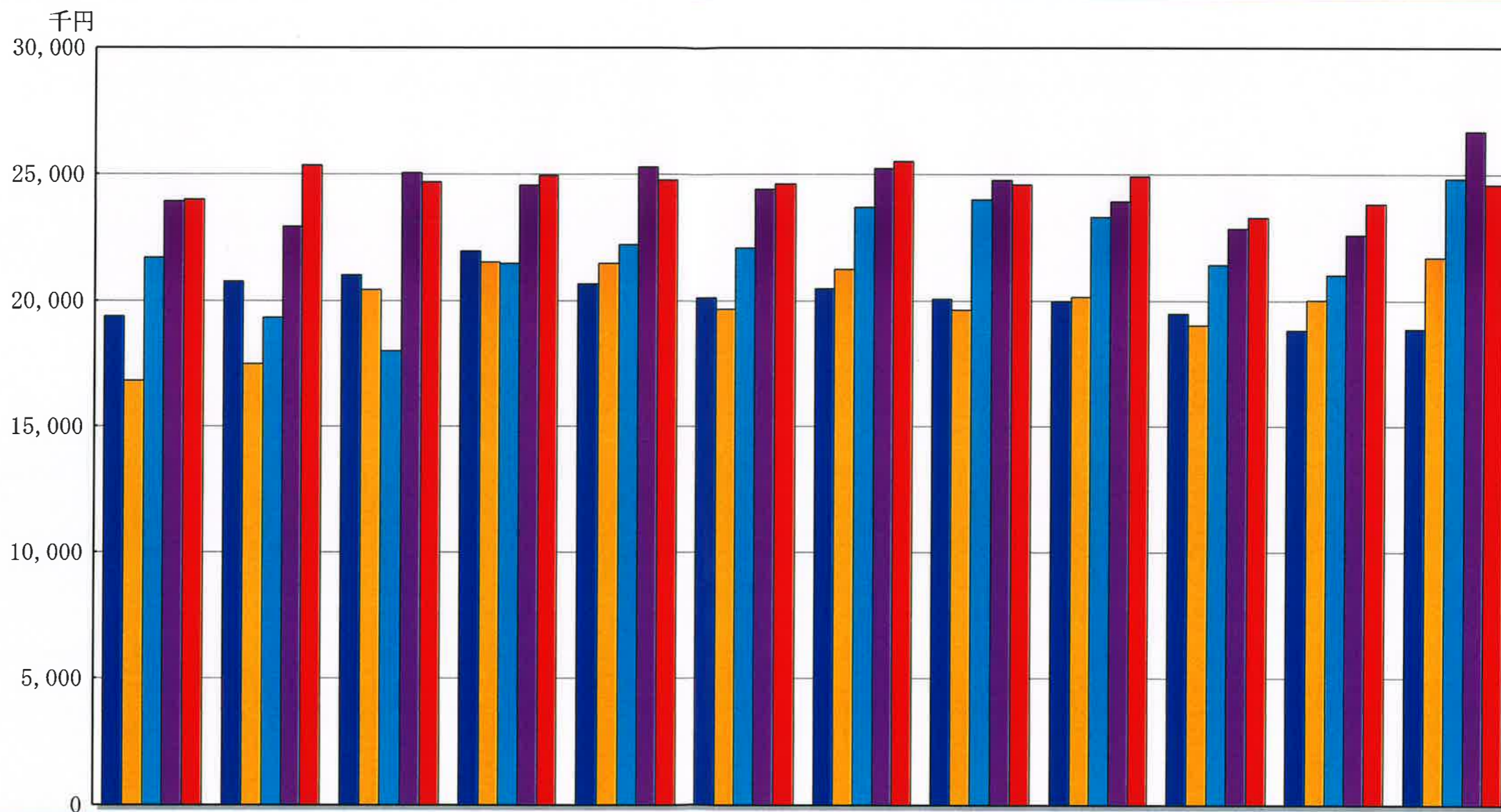
単位： 円

| 勘 定 科 目 | 科C | 総 合 計 | | 共通費 0 | | 本部 1 | | きつず 2 | | カフェ 3 | | | | | |
|--------------|-----|-------------|-------|-------------|--------|-------------|-------------|----------|-------------|-------------|--------|---------|---------|-------|------|
| | | 金額 | 構成比 | 金額 | 構成比部門比 | 金額 | 構成比部門比 | 金額 | 構成比部門比 | 金額 | 構成比部門比 | 金額 | 構成比部門比 | | |
| 障害福祉収入 | 612 | 183,664,432 | 62.2 | | | 151,600,507 | 100.0 | 82.5 | 32,063,925 | 22.8 | 17.5 | | | | |
| 介護収入 | 613 | 108,854,917 | 36.9 | | | | | | 108,854,917 | 77.2 | 100.0 | | | | |
| その他収入 | 614 | 1,800,000 | 0.6 | 1,800,000 | 100.0 | 100.0 | | | | | | | | | |
| カフェ売上 | 615 | 828,619 | 0.3 | | | | | | | | | 828,619 | 100.0 | | |
| 〔純売上高〕 | | 295,147,968 | 100.0 | 1,800,000 | 100.0 | 0.6 | 151,600,507 | 100.0 | 51.4 | 140,918,842 | 100.0 | 47.7 | 828,619 | 100.0 | 0.3 |
| カフェ仕入 | 712 | 561,386 | 0.2 | | | | | | | | | 561,386 | 67.7 | 100.0 | |
| 〔売上原価〕 | | 561,386 | 0.2 | | | | | | | | | 561,386 | 67.7 | 100.0 | |
| 〔売上総損益金額〕 | | 294,586,582 | 99.8 | 1,800,000 | 100.0 | 0.6 | 151,600,507 | 100.0 | 51.5 | 140,918,842 | 100.0 | 47.8 | 267,233 | 32.3 | 0.1 |
| 給与当給 | 832 | 113,813,808 | 38.6 | 12,000,000 | 666.7 | 10.5 | 40,620,463 | 26.8 | 35.7 | 61,193,345 | 43.4 | 53.8 | | | |
| 雑給 | 833 | 74,593,736 | 25.3 | | | | 30,866,815 | 20.4 | 41.4 | 43,726,921 | 31.0 | 58.6 | | | |
| 賞与 | 834 | 22,854,500 | 7.7 | | | | 8,520,000 | 5.6 | 37.3 | 14,334,500 | 10.2 | 62.7 | | | |
| 法定福利費 | 836 | 32,689,936 | 11.1 | 32,689,936 | ***.* | 100.0 | | | | | | | | | |
| 福利厚生費 | 837 | 3,054,106 | 1.0 | 2,694,804 | 149.7 | 88.2 | 241,174 | 0.2 | 7.9 | 118,128 | 0.1 | 3.9 | | | |
| リース料 | 841 | 1,558,920 | 0.5 | 1,558,920 | 86.6 | 100.0 | | | | | | | | | |
| 旅費交通費 | 842 | 1,854,587 | 0.6 | 239,606 | 13.3 | 12.9 | 175,620 | 0.1 | 9.5 | 1,435,111 | 1.0 | 77.4 | 4,250 | 0.5 | 0.2 |
| 通交信際費 | 843 | 3,264,903 | 1.1 | 405,394 | 22.5 | 12.4 | 412,720 | 0.3 | 12.6 | 2,442,529 | 1.7 | 74.8 | 4,260 | 0.5 | 0.1 |
| 交際費 | 844 | 955,325 | 0.3 | 922,779 | 51.3 | 96.6 | 3,594 | 0.0 | 0.4 | 28,952 | 0.0 | 3.0 | | | |
| 減価償却費 | 845 | 5,072,400 | 1.7 | 5,072,400 | 281.8 | 100.0 | | | | | | | | | |
| 賃借料 | 846 | 14,595,472 | 4.9 | 4,187,052 | 232.6 | 28.7 | | | | 10,408,420 | 7.4 | 71.3 | | | |
| 保険料 | 847 | 2,602,707 | 0.9 | 2,337,237 | 129.8 | 89.8 | 153,760 | 0.1 | 5.9 | 111,710 | 0.1 | 4.3 | | | |
| 修繕費 | 848 | 1,858,620 | 0.6 | 1,182,890 | 65.7 | 63.6 | 367,730 | 0.2 | 19.8 | 308,000 | 0.2 | 16.6 | | | |
| 水道光熱費 | 849 | 2,532,200 | 0.9 | | | | 1,567,790 | 1.0 | 61.9 | 964,410 | 0.7 | 38.1 | | | |
| 燃料費 | 851 | 2,311,167 | 0.8 | 2,061,205 | 114.5 | 89.2 | 4,000 | 0.0 | 0.2 | 245,962 | 0.2 | 10.6 | | | |
| 消耗品費 | 852 | 7,694,066 | 2.6 | 5,426,653 | 301.5 | 70.5 | 1,263,573 | 0.8 | 16.4 | 771,193 | 0.5 | 10.0 | 232,647 | 28.1 | 3.0 |
| 租税公課 | 853 | 577,100 | 0.2 | 575,000 | 31.9 | 99.6 | | | | 2,100 | 0.0 | 0.4 | | | |
| 事務用品費 | 856 | 311,716 | 0.1 | 311,716 | 17.3 | 100.0 | | | | | | | | | |
| 広告宣伝費 | 857 | 22,000 | 0.0 | 22,000 | 1.2 | 100.0 | | | | | | | | | |
| 支払手数料 | 858 | 1,203,125 | 0.4 | 763,125 | 42.4 | 63.4 | | | | 440,000 | 0.3 | 36.6 | | | |
| 新聞図書費 | 861 | 79,438 | 0.0 | 27,363 | 1.5 | 34.4 | 47,995 | 0.0 | 60.4 | 4,080 | 0.0 | 5.1 | | | |
| 雑費 | 869 | 4,614,158 | 1.6 | 4,436,514 | 246.5 | 96.2 | 97,870 | 0.1 | 2.1 | 67,643 | 0.0 | 1.5 | 12,131 | 1.5 | 0.3 |
| 〔販売費及び一般管理費〕 | | 298,113,990 | 101.0 | 76,914,594 | ***.* | 25.8 | 84,343,104 | 55.6 | 28.3 | 136,603,004 | 96.9 | 45.8 | 253,288 | 30.6 | 0.1 |
| 【営業損益金額】 | | ▲3,527,408 | ▲1.2 | ▲75,114,594 | ***.* | ***.* | 67,257,403 | 44.4 | ***.* | 4,315,838 | 3.1 | ▲122.4 | 13,945 | 1.7 | ▲0.4 |
| 受取利息 | 911 | 158 | 0.0 | 158 | 0.0 | 100.0 | | | | | | | | | |
| 受取配当金 | 912 | 1,592 | 0.0 | 1,592 | 0.1 | 100.0 | | | | | | | | | |
| 雑収入 | 914 | 3,089,197 | 1.0 | 2,991,697 | 166.2 | 96.8 | | | | 97,500 | 0.1 | 3.2 | | | |
| 〔営業外収益〕 | | 3,090,947 | 1.0 | 2,993,447 | 166.3 | 96.8 | | | | 97,500 | 0.1 | 3.2 | | | |
| 支払利息割引料 | 921 | 456,146 | 0.2 | 456,146 | 25.3 | 100.0 | | | | | | | | | |
| 〔営業外費用〕 | | 456,146 | 0.2 | 456,146 | 25.3 | 100.0 | | | | | | | | | |
| 【経常損益金額】 | | ▲892,607 | ▲0.3 | ▲72,577,293 | ***.* | ***.* | 67,257,403 | 44.4 | ***.* | 4,413,338 | 3.1 | ▲494.4 | 13,945 | 1.7 | ▲1.6 |
| ※共通費配賦※ | | | | ▲72,577,293 | ***.* | | 37,495,350 | 24.7 | | 35,081,943 | 24.9 | | | | |
| 【配賦後経常損益金額】 | | ▲892,607 | ▲0.3 | | | | 29,762,053 | 19.6 | ***.* | ▲30,668,605 | ▲21.8 | ***.* | 13,945 | 1.7 | ▲1.6 |
| 【税引前当期純損益金額】 | | ▲892,607 | ▲0.3 | | | | 29,762,053 | 19.6 | ***.* | ▲30,668,605 | ▲21.8 | ***.* | 13,945 | 1.7 | ▲1.6 |
| 【当期純損益金額】 | | ▲892,607 | ▲0.3 | | | | 29,762,053 | 19.6 | ***.* | ▲30,668,605 | ▲21.8 | ***.* | 13,945 | 1.7 | ▲1.6 |

売上高五期比較グラフ

0181 有限会社 しえあーど

令和 5年 4月～令和 6年 3月



| 売上高 | | 4月 | 5月 | 6月 | 7月 | 8月 | 9月 | 10月 | 11月 | 12月 | 1月 | 2月 | 3月 |
|-----|-------------|--------|--------|--------|--------|--------|--------|--------|--------|--------|--------|--------|--------|
| ■ | 5. 4~ 6. 3 | 24,003 | 25,352 | 24,691 | 24,958 | 24,775 | 24,627 | 25,504 | 24,595 | 24,921 | 23,286 | 23,831 | 24,599 |
| ■ | 4. 4~ 5. 3 | 23,925 | 22,921 | 25,064 | 24,565 | 25,277 | 24,402 | 25,234 | 24,766 | 23,917 | 22,842 | 22,605 | 26,686 |
| ■ | 3. 4~ 4. 3 | 21,713 | 19,331 | 18,004 | 21,482 | 22,221 | 22,097 | 23,687 | 24,016 | 23,304 | 21,410 | 21,011 | 24,809 |
| ■ | 2. 4~ 3. 3 | 16,805 | 17,480 | 20,418 | 21,524 | 21,474 | 19,664 | 21,238 | 19,628 | 20,145 | 19,011 | 20,011 | 21,690 |
| ■ | 31. 4~ 2. 3 | 19,369 | 20,747 | 21,014 | 21,946 | 20,641 | 20,120 | 20,462 | 20,074 | 19,969 | 19,483 | 18,811 | 18,873 |

(単位：千円)